

USER'S MANUAL

USB 2.0

Multi Card Reader

Index

Page

Introduction.....	1
Features.....	1
Specification.....	1
Requirements.....	2
Package contents.....	2
Software Installation.....	3
User's Low Level Format Guide.....	6

Introduction :

The USB2.0 Multi Card Reader/Writer supports the memory card as below:

SD/Mini SD

Trans Flash card /Micro SD (optional)

MMC/RS-MMC/MMC 4.0/RS-MMC 4.0/SD Ultra II/SD Extreme and series cards

MS/ MS PRO/ MS Magic Gate / MS Memory Select Function/MS PRO Magic Gate/

MS PRO Ultra II/MS ROM Card/ MS PRO Duo/ MS Duo/MS PRO Duo Magic Gate/

MS Duo Magic Gate/MS PRO Duo Ultra II / MS PRO Extreme and series cards

SM (SMC) /XD Card(optional)

CFI / CFII/Micro Drive (MD)/ Magic Stor/CF I Ultra II /CF I Extreme and series cards.

Features :

USB	<ul style="list-style-type: none">✧ Support USB 1.1/2.0 interface.✧ USB and ACPI compliant.✧ Support USB High –speed: 480M bps /Full-Speed 12Mbps.✧ Truly Plug and Play automatic system configuration.
Power	<ul style="list-style-type: none">✧ USB Bus power only.

Specification :

Interface	<ul style="list-style-type: none">✧ Universal Serial Bus (USB) Revision 1.1/2.0 device.
Connectors list	SD/Mini SD Trans Flash card /Micro SD(optional) MMC/RS-MMC/MMC 4.0/RS-MMC 4.0/SD Ultra II/ SD Extreme and series cards MS/ MS PRO/ MS Magic Gate / MS Memory Select Function/MS PRO Magic Gate/MS PRO Ultra II/ MS ROM Card/ MS PRO Duo/ MS Duo/MS PRO Duo Magic Gate/MS Duo Magic Gate/MS PRO Duo Ultra II / MS PRO Extreme and series cards SM (SMC) /XD Card(optional) CFI / CFII/Micro Drive (MD)/ Magic Stor/CF I ultra II /CF I Extreme and series cards
Cable	USB cable (A type male to mini B type) USB extension cable A female to A male type (optional)
LED	<ul style="list-style-type: none">✧ Active LED✧ Power LED

Requirements :

- ✧ IBM or other Compatible PCs / Mac G4
- ✧ USB 1.1/2.0 Host or USB 1.1/2.0 HUB device.
- ✧ Windows 98SE, Windows ME, Win2000 or Windows XP operating system or above / MAC 10.3 or above

Packing contents :

Item
USB 2.0 Multi Card Reader/Writer
CD Driver / User's Manual
Cable Type : Optional cable as below. *USB Extension cable: A male to mini B type *USB Extension cable: A female to A male type

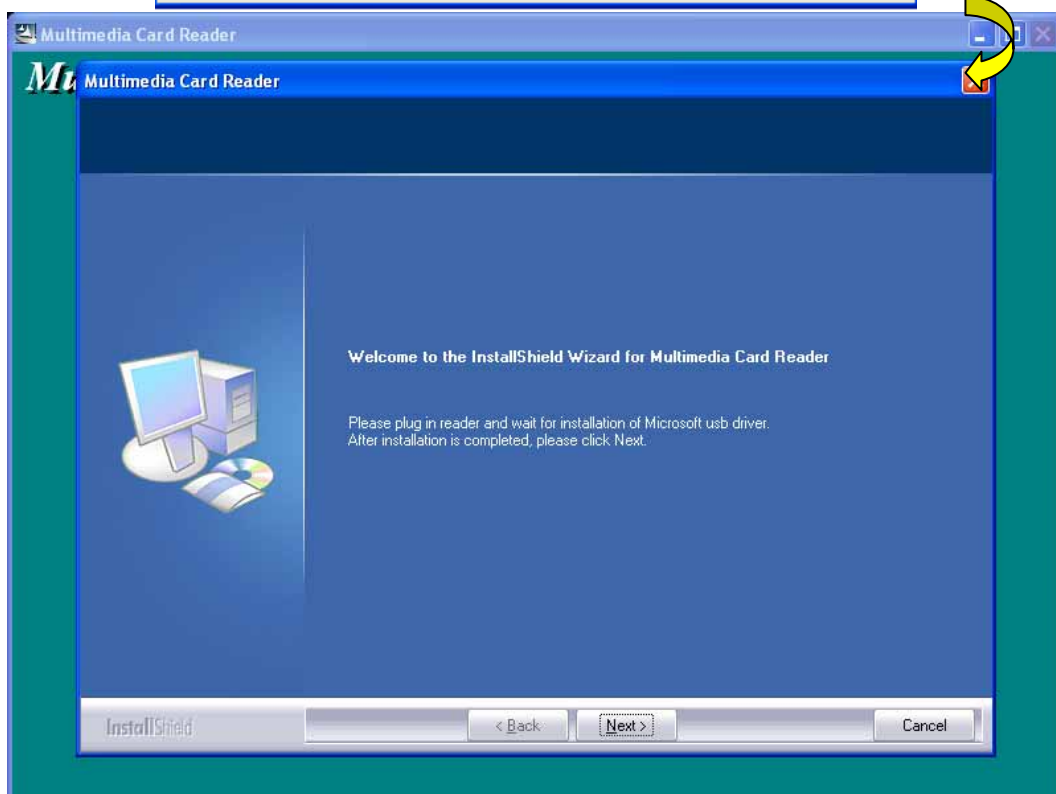
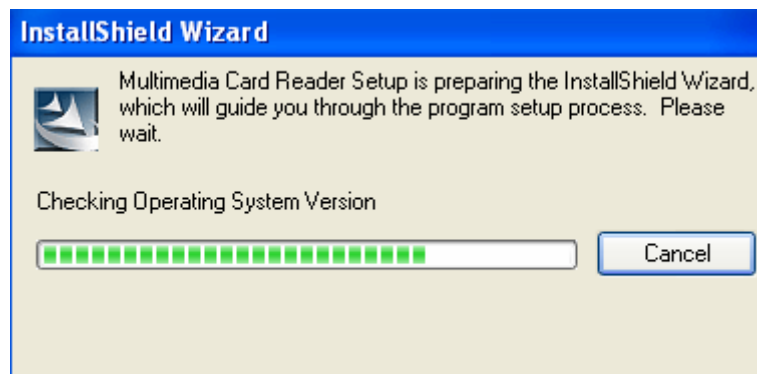
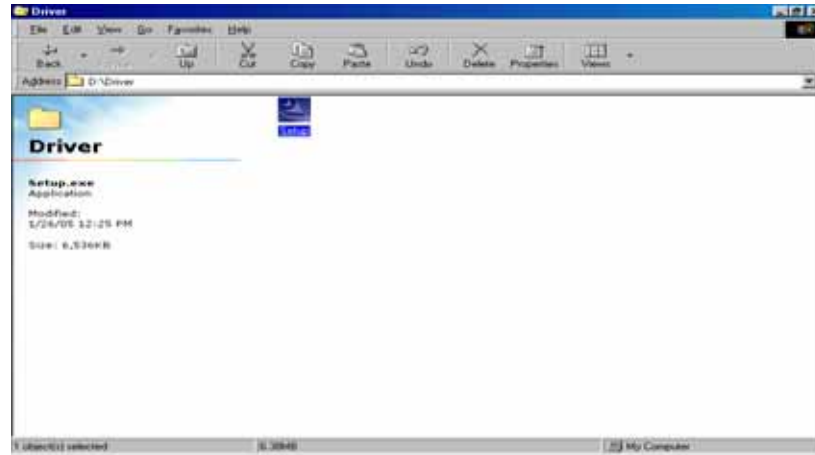
Software Installation :

.Windows 98SE and Windows 2000

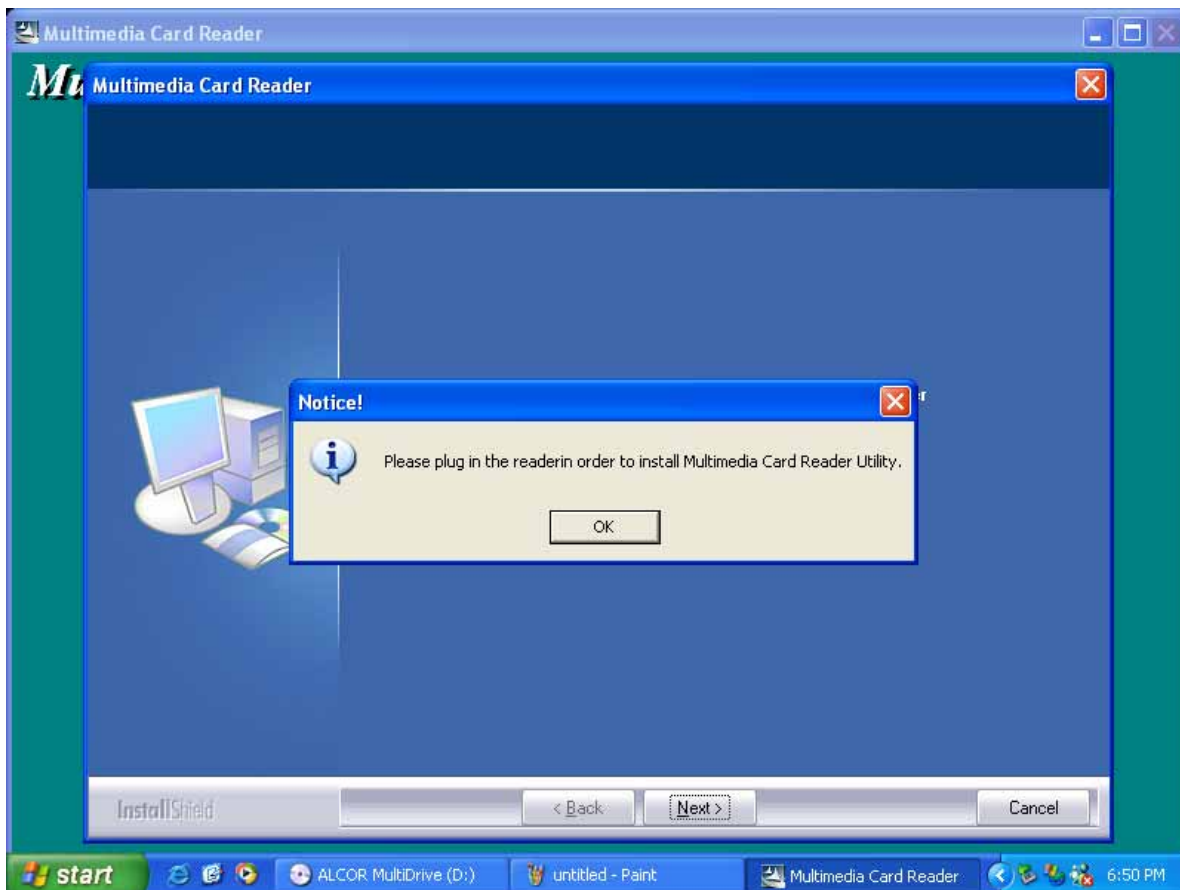
Step1 : Please Insert the Installation CD into CD-ROM.

Step2 : Please double click "Driver" folder

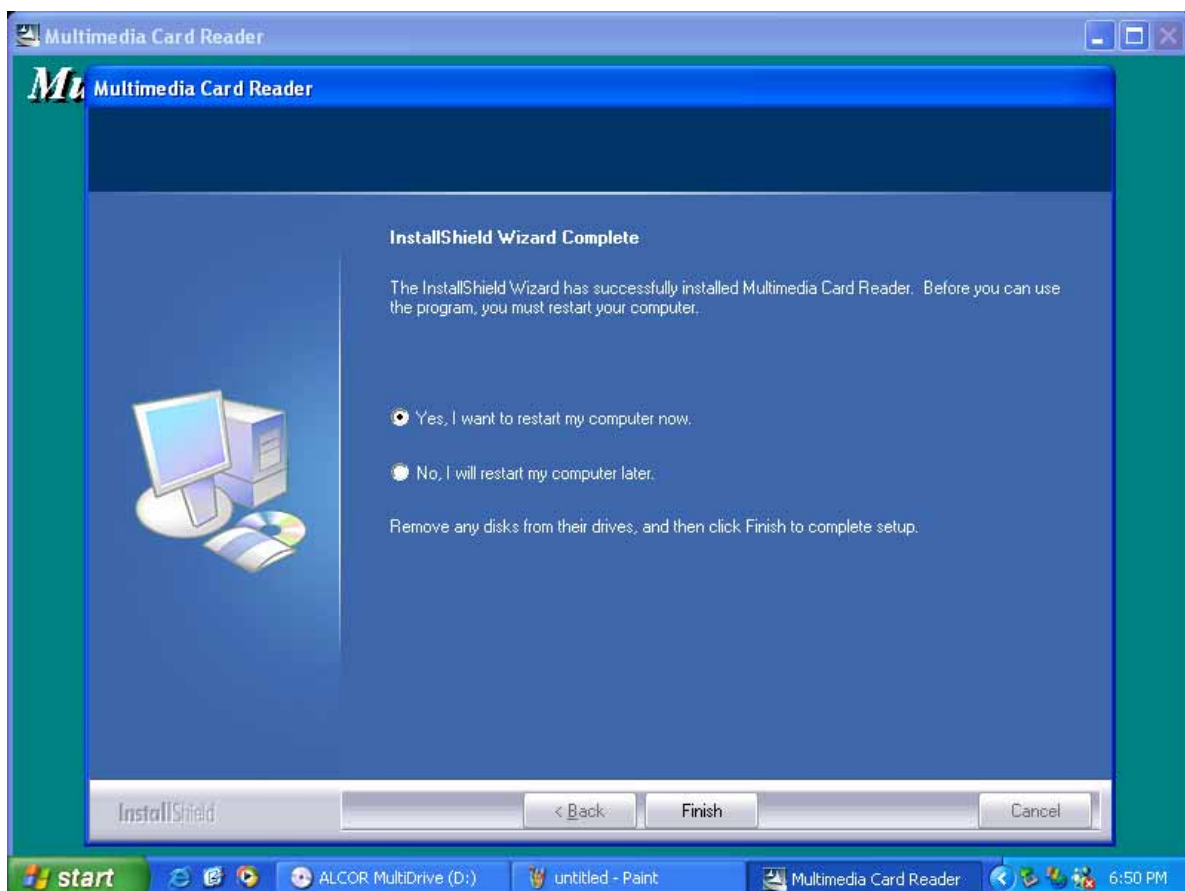
Step3 : Please double Click "Setup.exe" as below.



Step4 : Please plug in mini Combo Reader and click "Next" to continue.



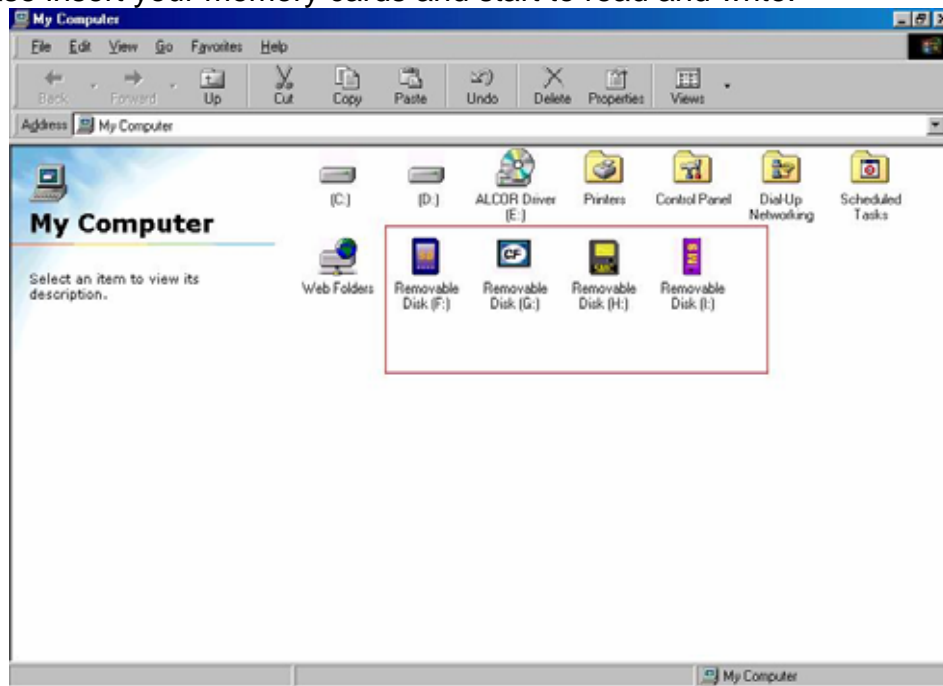
Step5 : Please click “OK” to continue.



Step6: The driver has been setup successfully. Please click "Finish" and restart PC.

Step7: When you plug card reader and double click “My Computer” after PC being restarted.
 Four kinds of Icons will be appeared as Compact Flash (CF), Memory Stick (MS),
 Secure Digital (SD)/ MultiMedia Card and Smart Media.
 (Icons for Win98SE and Win2000sp3 /sp4)

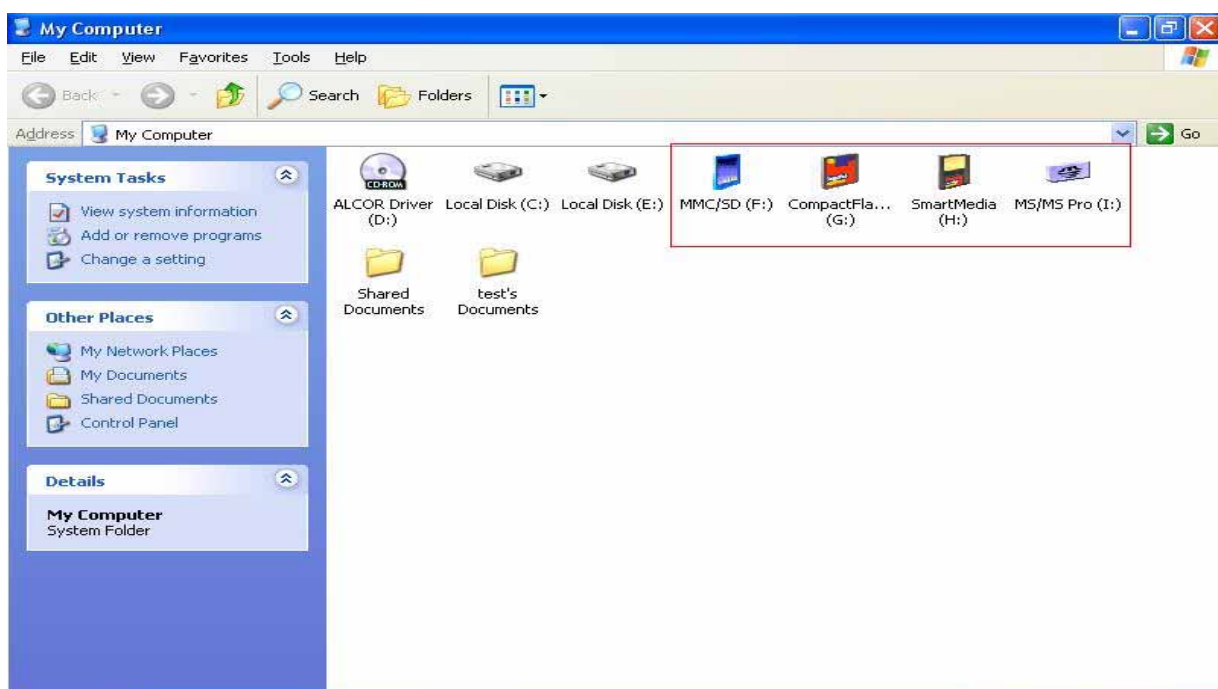
Step8: Please insert your memory cards and start to read and write.



Windows ME and Windows XP/XP+SP1 (SP2)

You do not need driver for installation if your Operation System is Windows ME or Windows XP, the system will detect driver automatically.

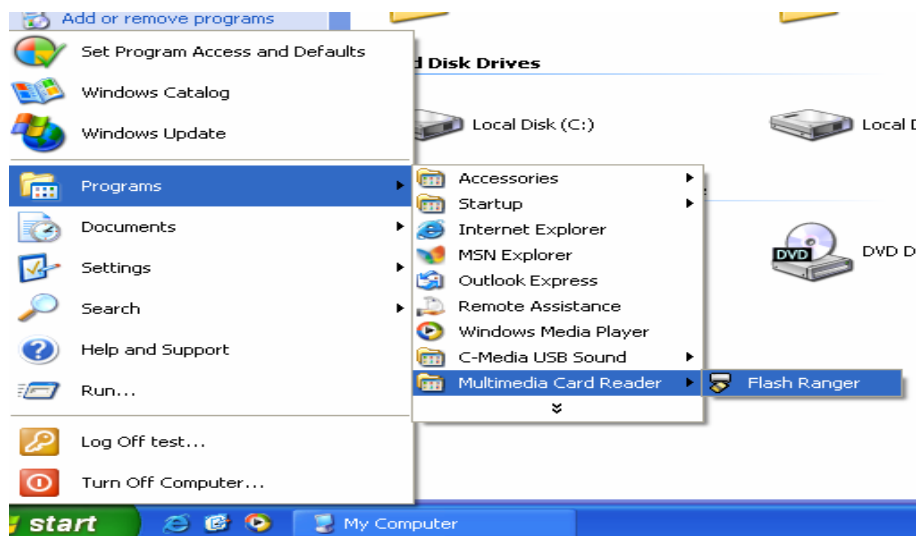
Turn On your computer, system will auto detect and down load the driver. You will see 4 removable disk icons in your “My computer”. Now you can start to use the Card Reader/Writer. If you want to see 4 coloring icons as below, please follow step 1~ step7 to install driver.



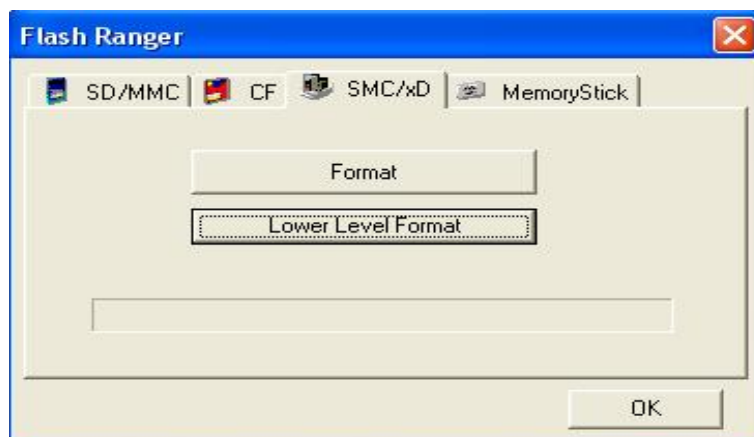
User's Low Level Format Guide

***If your SMC or XD card appear the status as the "Write protection" or read /write error , please use the attached program to format your memory card as below.

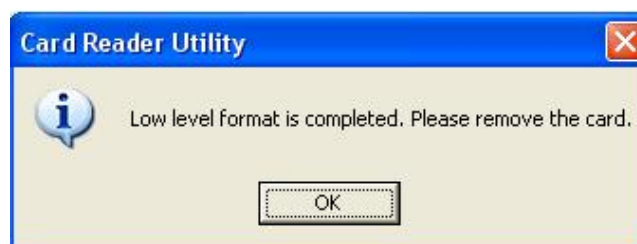
***Please insert your memory card to run "Flash Ranger" tool as below.



1. Please click "start ->Programs -> Multimedia Card Reader" and click "Flash Ranger".



2. Please select SMC/XD and click "Low Level Format" to continue.



3. If the "Low level Format" is completed, please remove the card and click "OK".

Mac 10.3 or above:

If your MAC O.S is 10.3 or above, you don't need driver for installation. Please plug-in the card reader and insert memory cards, you can start to use the Flash Card Reader/Writer now.